

*Yes, it's
included*

LENNAR **TwinEagles Golf & Country Club**

Nina	3 Bedrooms, 2 Baths Great Room, 2-Car Courtyard Garage	1,649	\$419,990
Victoria	2 Bedrooms, Den, 2 Baths Great Room, 2-Car Courtyard Garage	1,850	\$444,990
Sophia	4 Bedrooms, 3 Baths Great Room, 2-Car Garage	2,032	\$469,990
Isabella	3 Bedrooms, Den, 2 Baths Great Room, 2-Car Garage	2,246	\$489,990

***Price Includes Standard Features Plus Standard Home site
and Pool & Spa Package**

TwinEagles Club Golf Membership fee is \$10,000.00 per year (plus applicable sales tax) payable annually.
This fee is for access to the Golf Course and all of it's facilities

TwinEagles Homeowners Association fee is \$2,300.00 payable annually. This assessment is for
maintenance of the common areas of the community

Fenhurst Neighborhood Association fees of \$267.12 per month, collected quarterly.
Assessment includes homes & common areas – Landscape Maintenance, Irrigation Maintenance, Tree Trimming, Mulch,
Landscape Replacement, Annuals, Entry Sign

To Be Collected At Closing

A one-time Recreational Fee of \$2,500.00 payable to TwinEagles Club, LLC
A one-time Recreational Fee of \$2,500.00 payable to TwinEagles Development AGR, LLC
A one-time Replacement Fee of \$1,500.00 payable to TwinEagles Homeowners Association
A one-time Working Fund Capital fee of \$500.00 payable to Fenhurst Neighborhood Association
Final Survey Fee of \$275.00

For More Information, Call (239) 209 – 6115

MODEL HOME FURNITURE, ACCESSORIES, WALLCOVERINGS, MODEL LANDSCAPING AND OPTIONS ARE FOR DISPLAY PURPOSES ONLY
AND ARE NOT INCLUDED IN THE PRICE OF THE HOME. IF YOU HAVE QUESTIONS, PLEASE SEE YOUR NEW HOME CONSULTANT.

OFFERS, INCENTIVES AND SELLER CONTRIBUTIONS ARE SUBJECT TO CERTAIN TERMS, CONDITIONS AND RESTRICTIONS WHICH MAY
INCLUDE USING DESIGNATED LENDERS AND AGENTS. LENNAR HOMES, LLC RESERVES THE RIGHT TO CHANGE PRICES OR WITHDRAW
ANY OFFER AT ANY TIME. SEE A LENNAR HOMES LLC NEW HOME CONSULTANT FOR FURTHER INFORMATION.

**ORAL REPRESENTATIONS CANNOT BE RELIED UPON AS CORRECTLY STATING
REPRESENTATIONS OF THE DEVELOPER, FOR CORRECT REPRESENTATIONS,
REFERENCES SHOULD BE MADE TO THIS BROCHURE AND TO THE DISCLOSURE
SUMMARY REQUIRED BY F.S. SECTION 720.401, TO BE FURNISHED BY A
DEVELOPER TO A BUYER OR LESSEE.**



LENNAR.COM

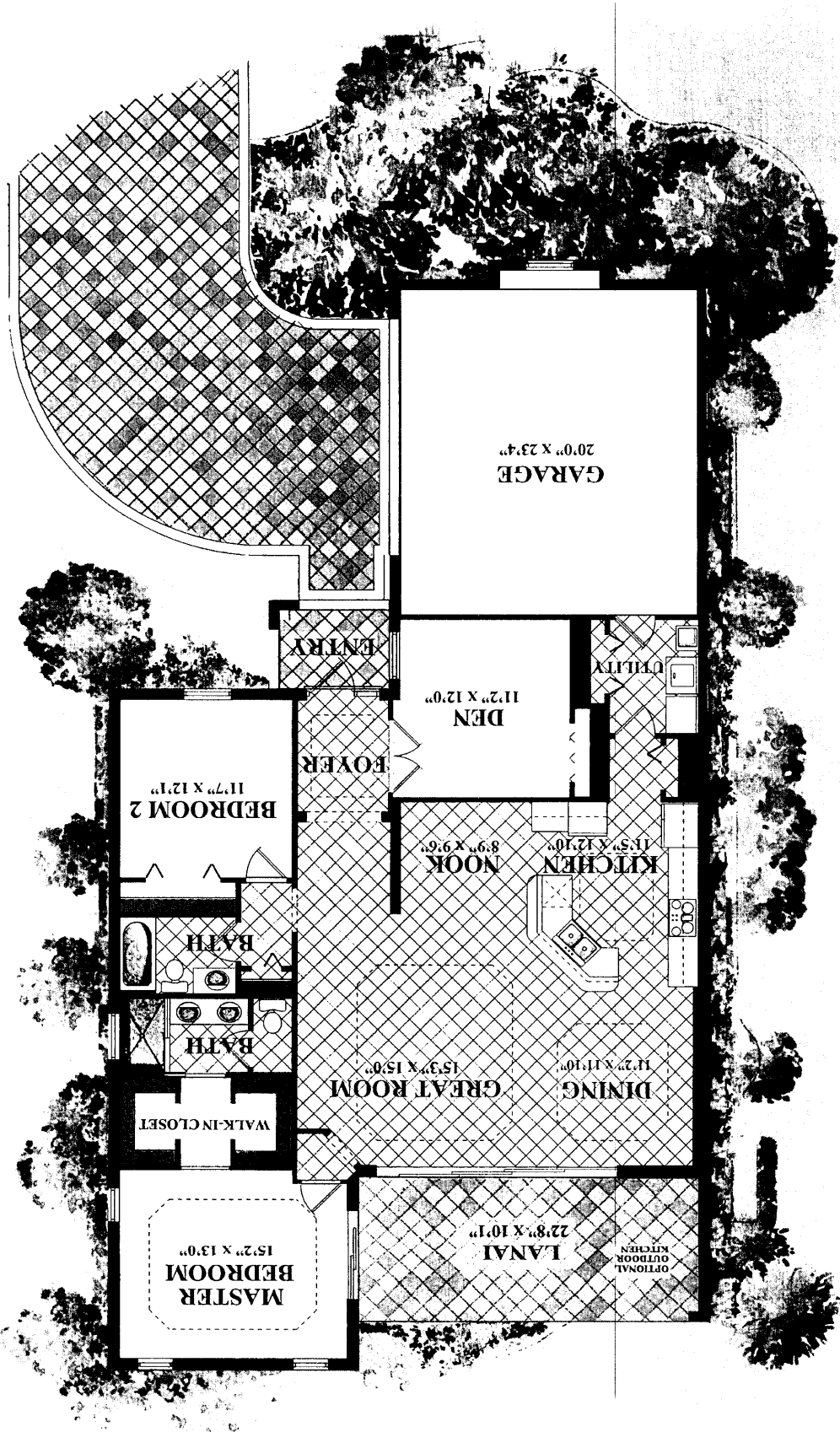


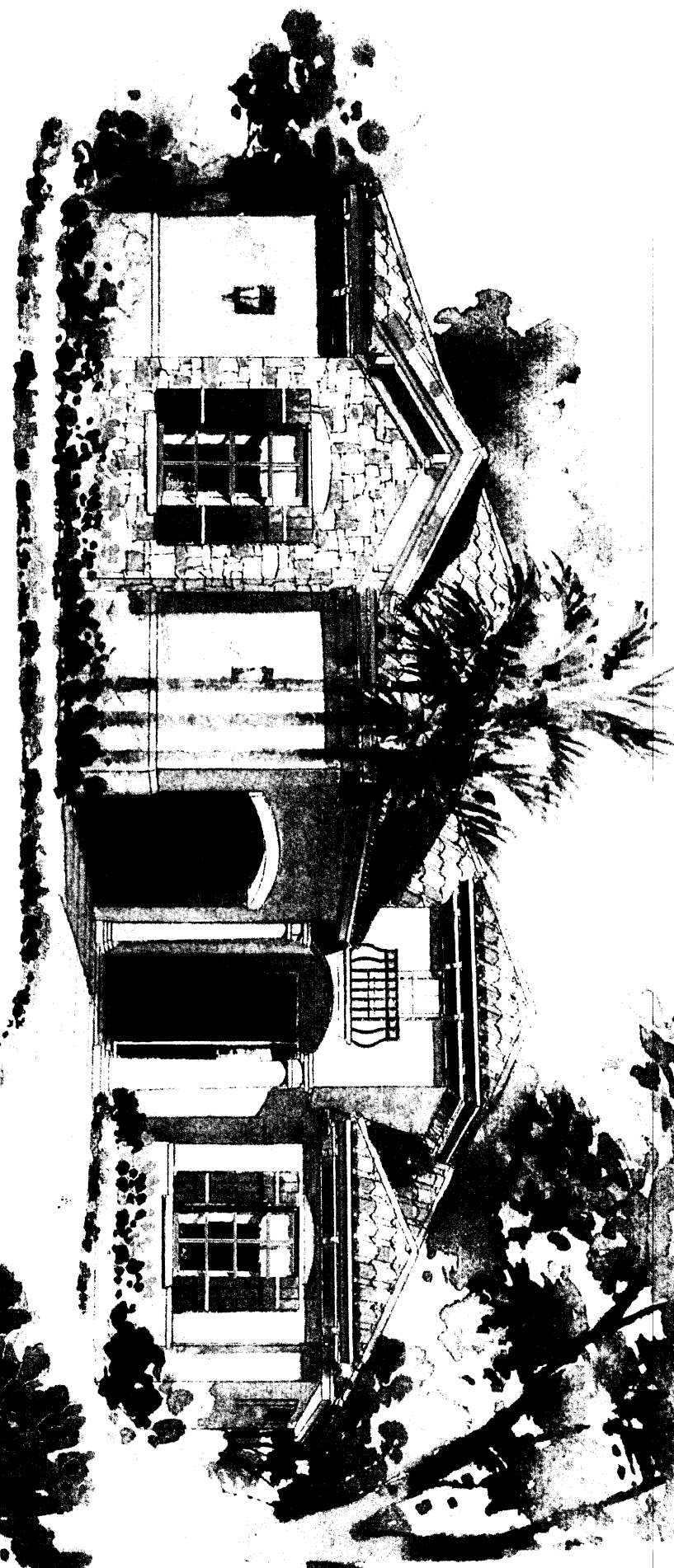
The Nina

Vatavner Studio

C

The Nina





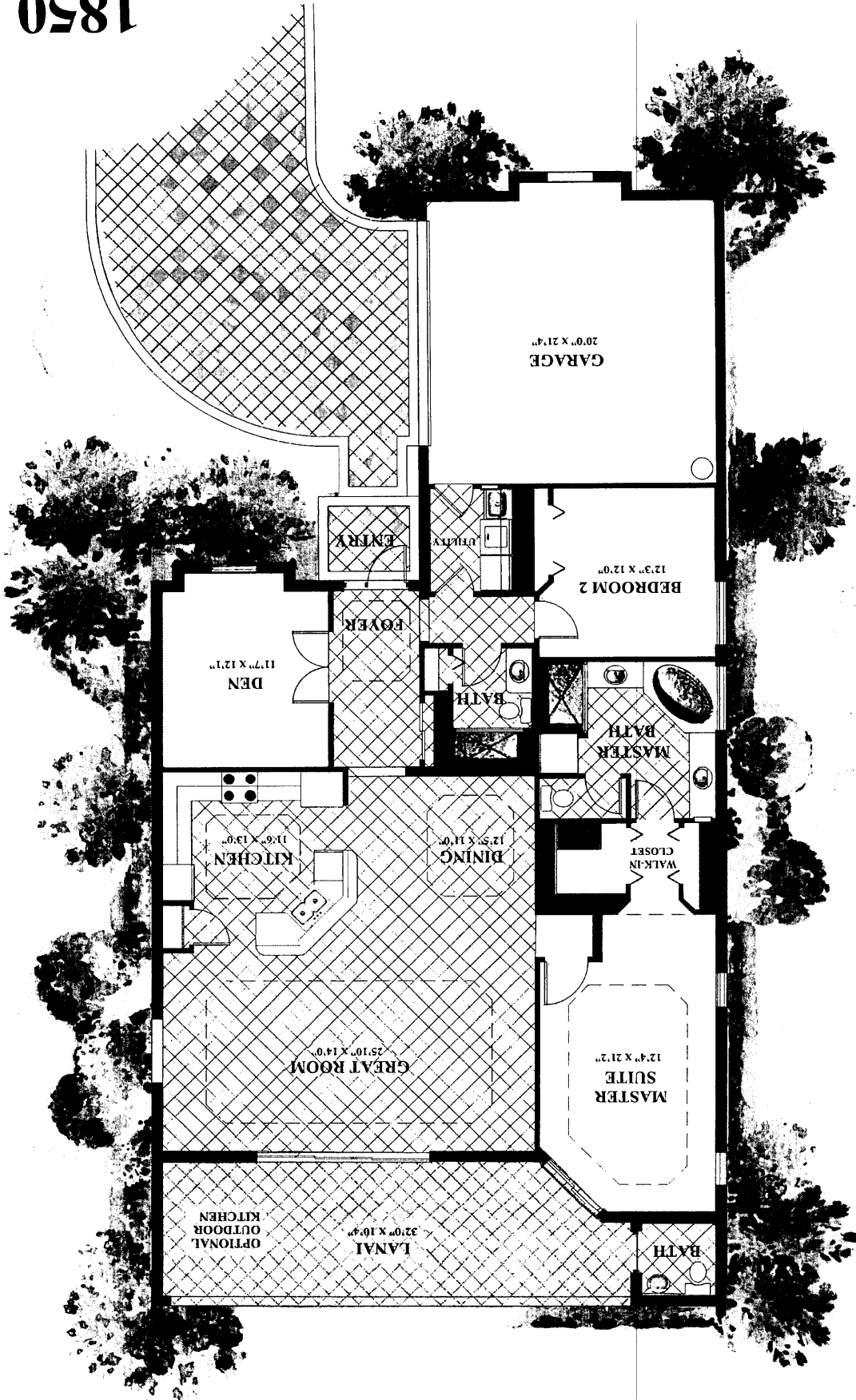
THE VICTORIA

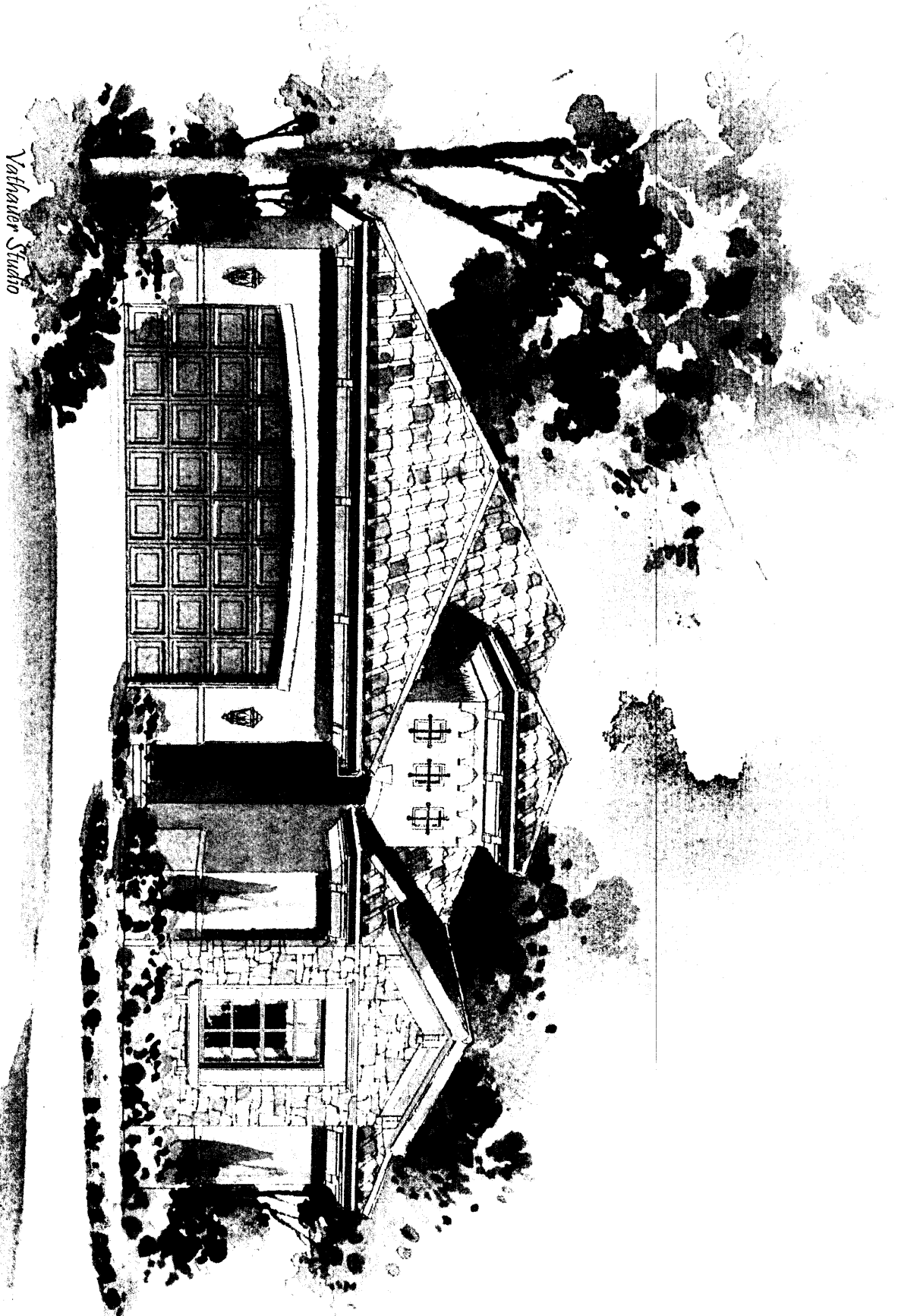
Vahner Studio



1850

The Virginia

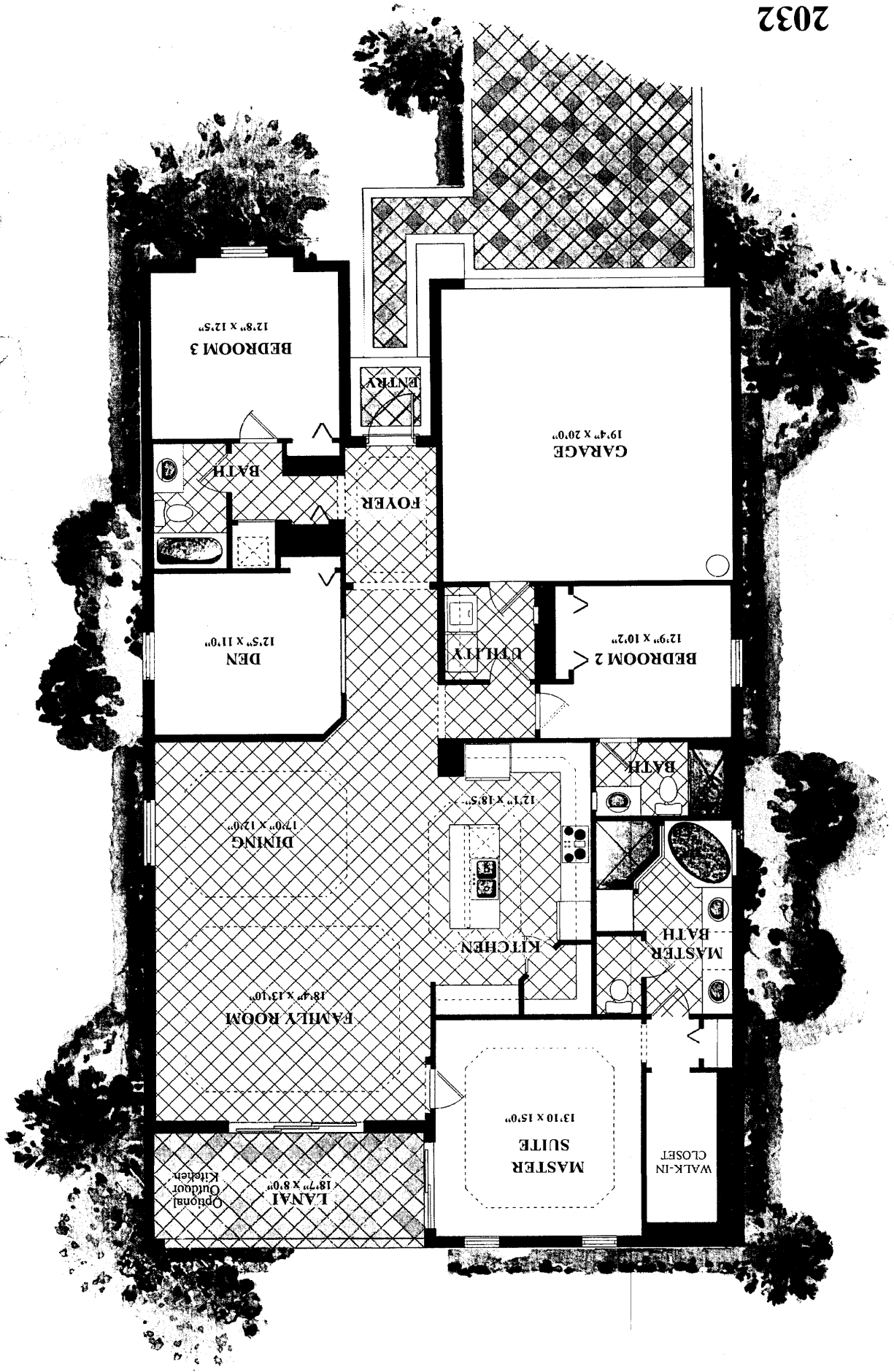


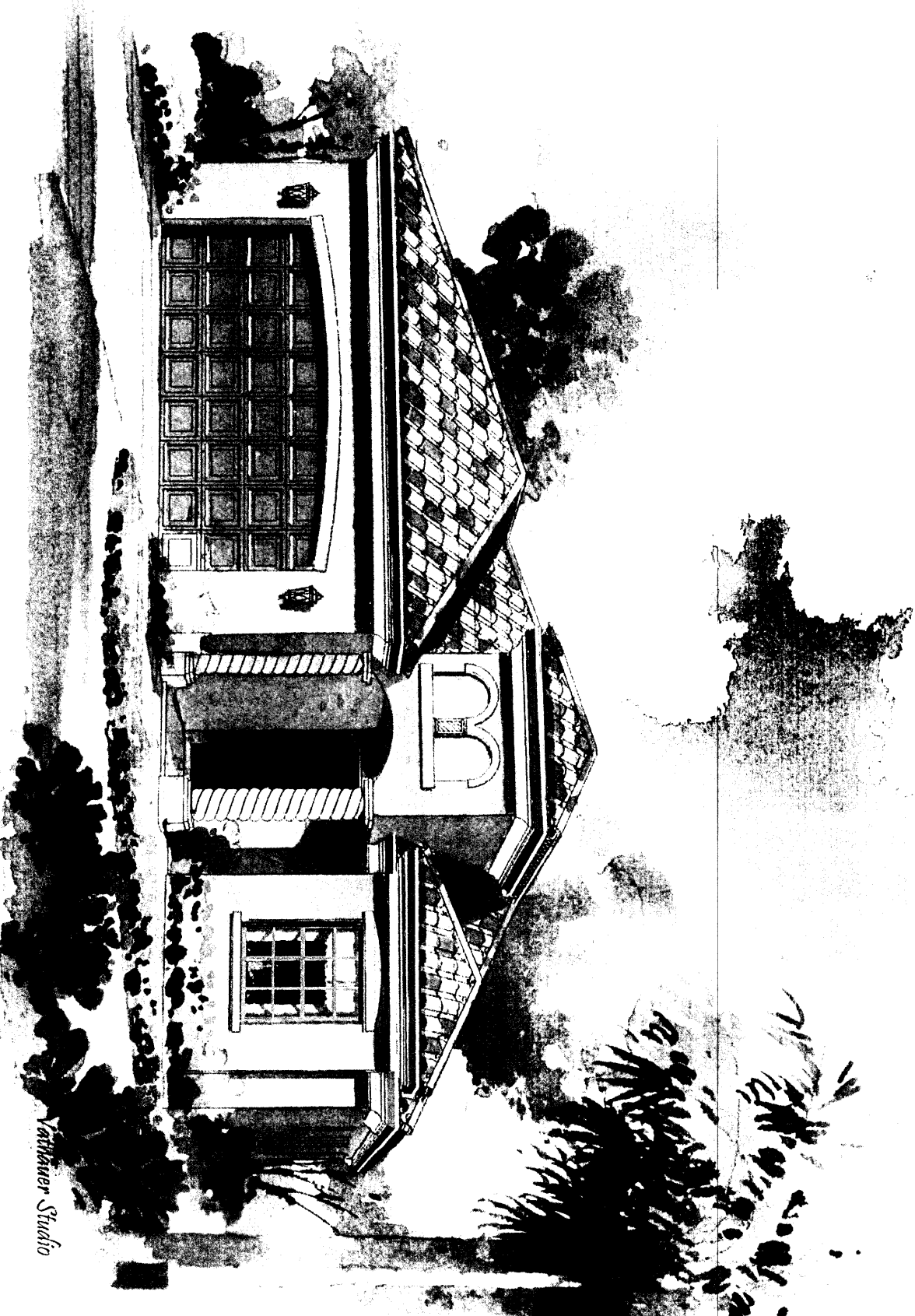


Vahlander Studio

THE SOPHIA

THE SOPHIA



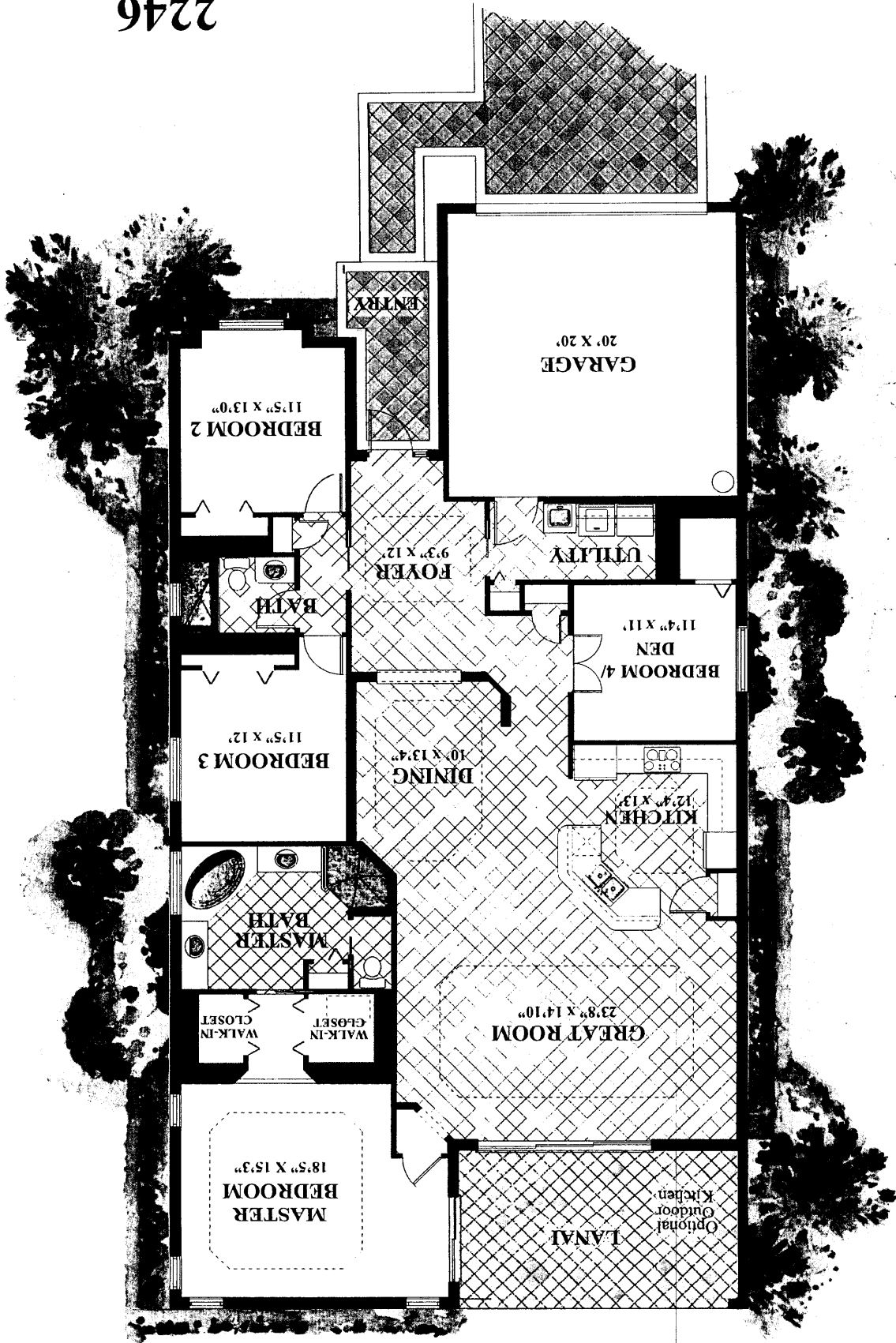


Vannoy Studio

THE ISABELLA

A

2246



THE ISARELLA